

Moving to 'Living' Stroke Clinical Guidelines

LSR Network April 2018
Kelvin Hill

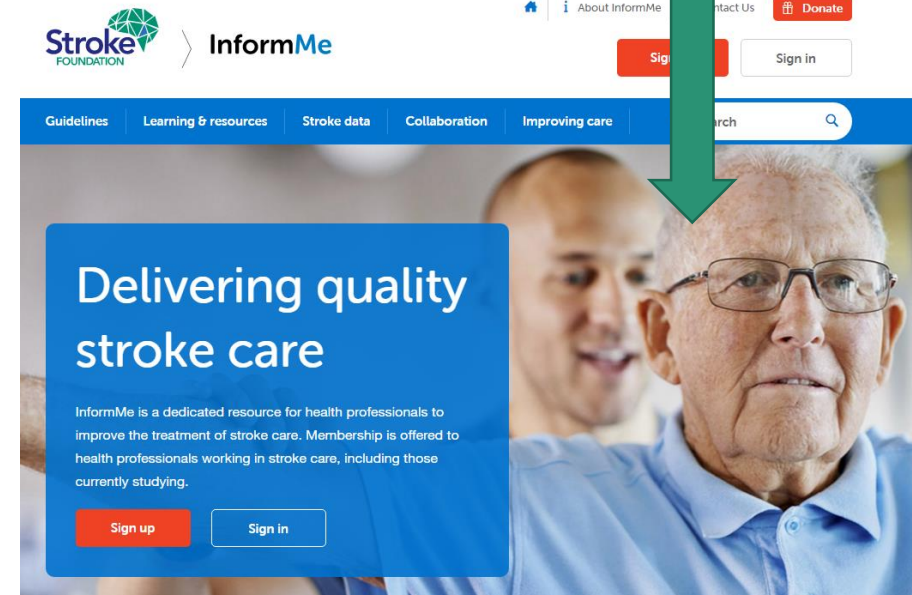
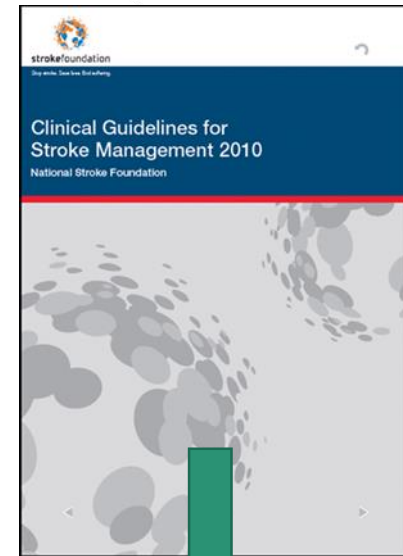
Background

- Guidelines since 2003
- Trying to collaborate internationally since 2006
- Normally 2 year updating cycle
- Train and use volunteer experts
- Advocating for living guidelines for many years

Previous versions:

2003; 2005; 2007; 2010; 2017

National Stroke Audit since 2007.



Current challenges

1. **Volume of literature (~110,000 citations -267% increase)**
2. **Project management – ongoing engagement of busy experts, definitions of ‘living’, public consultation process**
3. **No central agency for guidelines in Australia (and robust but slow approval process by NHMRC)**
4. **Impact on knowledge translation +++**
5. **Potential impact on performance indicators**
6. **Funding...**

Possible solutions?

1. Clear prioritisation decisions for key topics
2. Collaboration with Cochrane Stroke Group
3. Consistent methodology (GRADE etc)
4. Online tools (MAGICapp, Covidence etc).
5. International collaboration
6. Sell kidneys on black market...(joke)

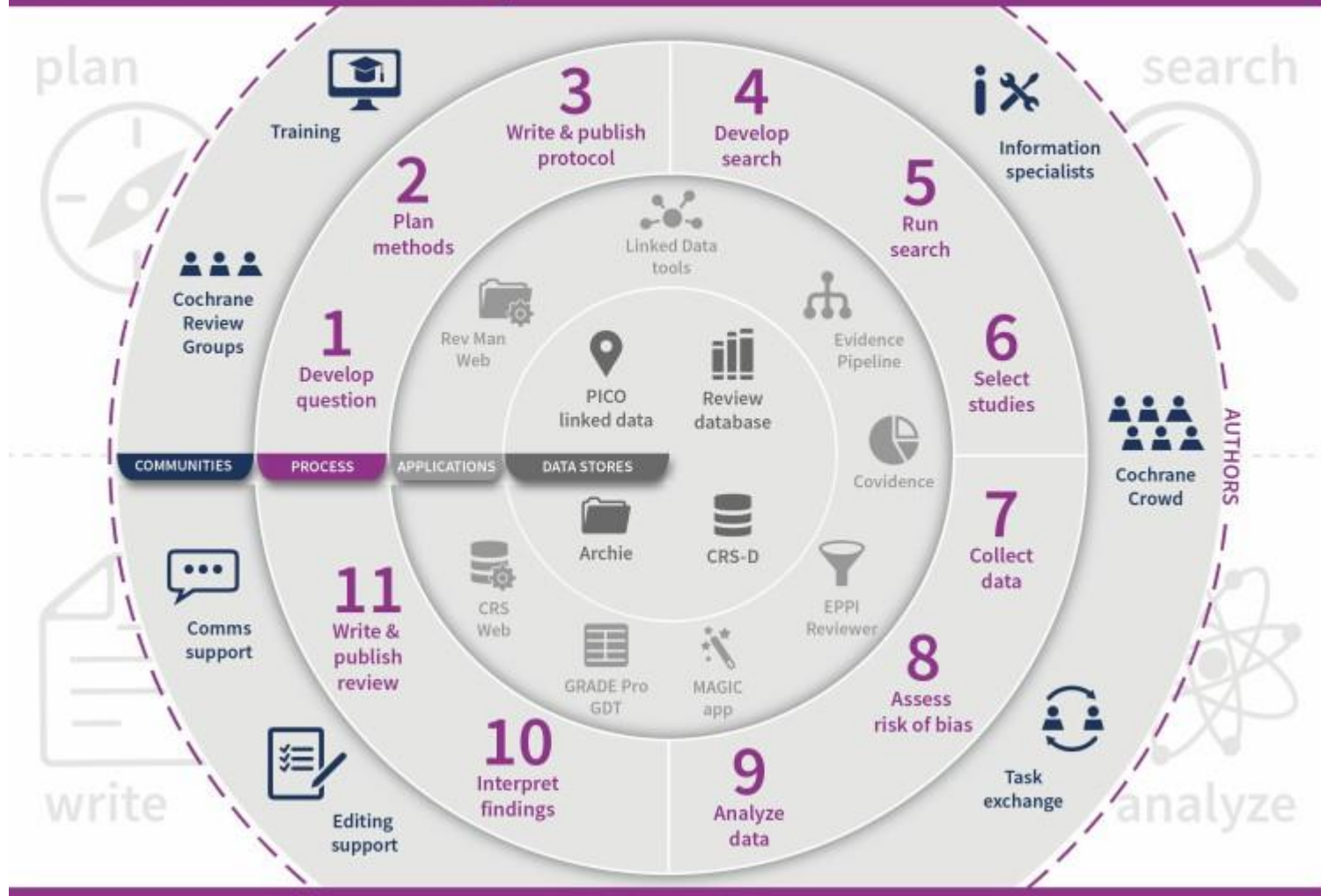


GRADE



M
app

New Cochrane Review Ecosystem



Where to from here?

- › Collaboration with Cochrane Stroke Group for literature identification
- › Prioritisation criteria –what are others using?
- › Successful international collaboration?
- › Advocacy with Australian Government+++ to fund model
- › Communication with NHMRC and testing approval of updated guideline

Questions?

Living Systematic Review Network

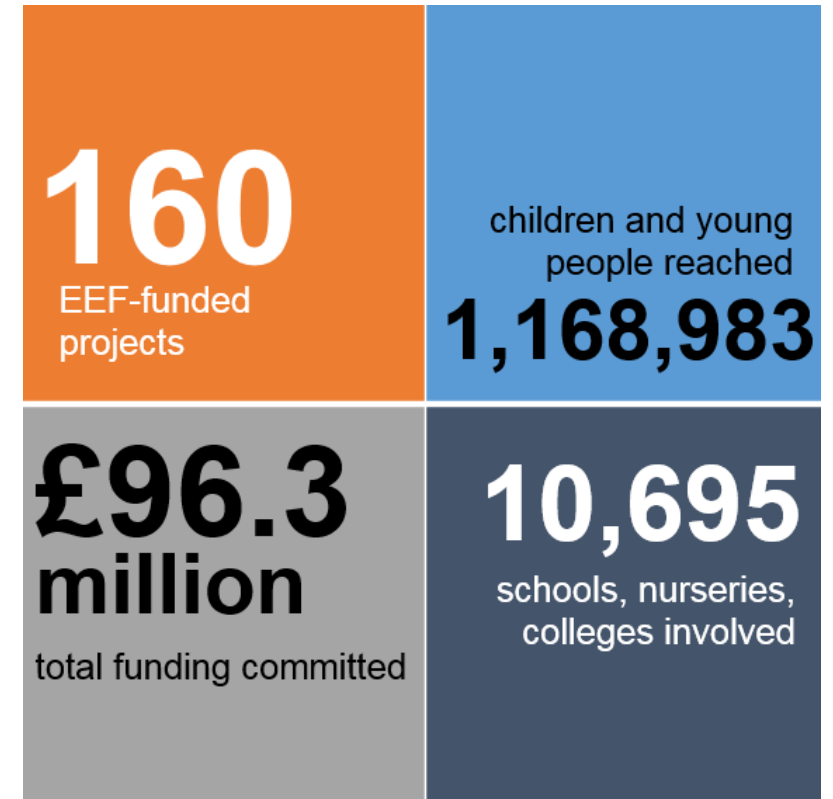
Jonathan Kay

Research and Publications Manager

Education Endowment Foundation

Who we are ...

- The EEF was founded in 2011 by lead charity the Sutton Trust, in partnership with Impetus, with a £125m founding grant from the UK Department for Education.
- In 2013, the EEF and the Sutton Trust joined the What Works Network, as the designated What Works Centre for Improving Education Outcomes for School-aged Children.
- The EEF aims to cut the link between family income and educational achievement through promoting the use of evidence.
- The EEF summarises and disseminates existing evidence, and funds new RCTs of promising approaches.



Education
Endowment
Foundation



@EducEndowFoundn
@JonathanKay9

Teaching and Learning Toolkit

An accessible summary of the international evidence on teaching 5-16 year-olds

Filter Toolkit

Filter results by keywords



Cost



Evidence



Months Impact

Reset 🔄

Toolkit Strand ▾

Cost ▾

Evidence Strength ▾

Impact (months) ▾

Arts participation

Low impact for low cost, based on moderate evidence.



+2

Aspiration interventions

Very low or no impact for moderate cost, based on very limited evidence.



0

Behaviour interventions

Moderate impact for moderate cost, based on extensive evidence.



+3

Block scheduling

Very low or no impact for very low cost, based on limited evidence.



0

Built environment

Very low or no impact for low cost, based on very limited evidence.



0

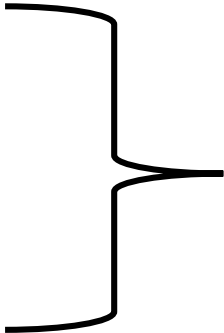
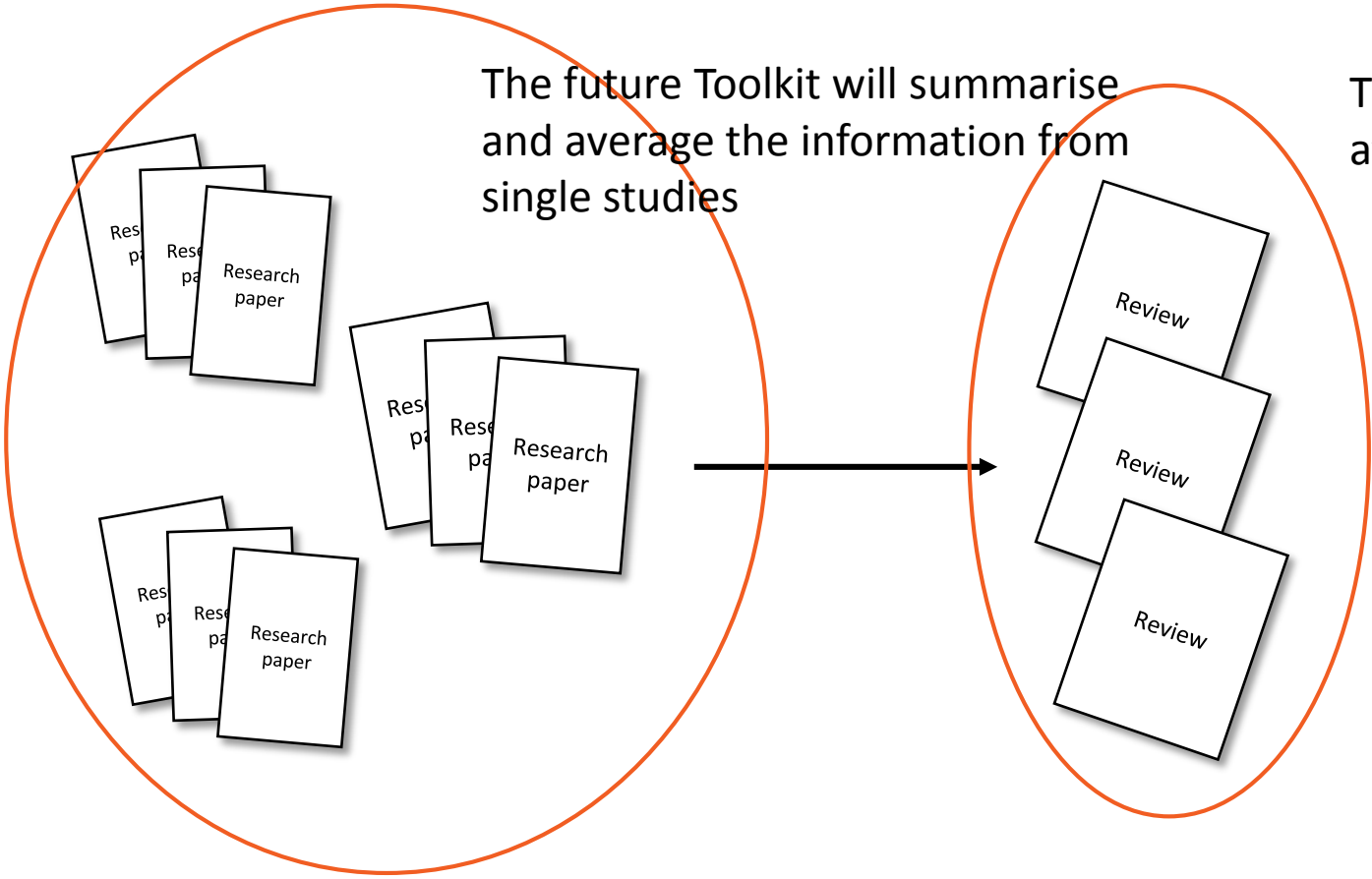
A live 'umbrella review' to a review of single studies

Single studies

Meta-analyses

The future Toolkit will summarise and average the information from single studies

The current Toolkit summarises and averages meta-analyses



Feedback

High impact for very low cost, based on moderate evidence.



The plan

Stage 1: 2018-2021

- A large database of around 10,000 studies coded for around 100 variables
- Studies will be collected by unzipping the current meta-analysis in the Toolkit
- Pilot data-visualisation tools to display differential impacts (for example, by age groups, country)
- Develop machine learning tools for future searching and screening
- Pilot systematic search criteria for stage 2

Stage 2: 2021 onwards

- Move towards 34 living systematic reviews
- Clearly specified search and screening criteria that are consistent across all 34 topics
- Non-English language studies
- Evaluation reporting templates that allow for easy data extraction for all EEF studies
- A shared global coding frame for education studies?

Challenges

- Creating shared inclusion criteria across 34 topics
- Keeping 34 living systematic reviews up to date
- Balancing search and sift accuracy with studies found through unzipping initial meta-analyses

- Balancing simple presentation with more complex messages
- Communicating why the estimates have changed



Questions



Education
Endowment
Foundation



@EducEndowFoundn

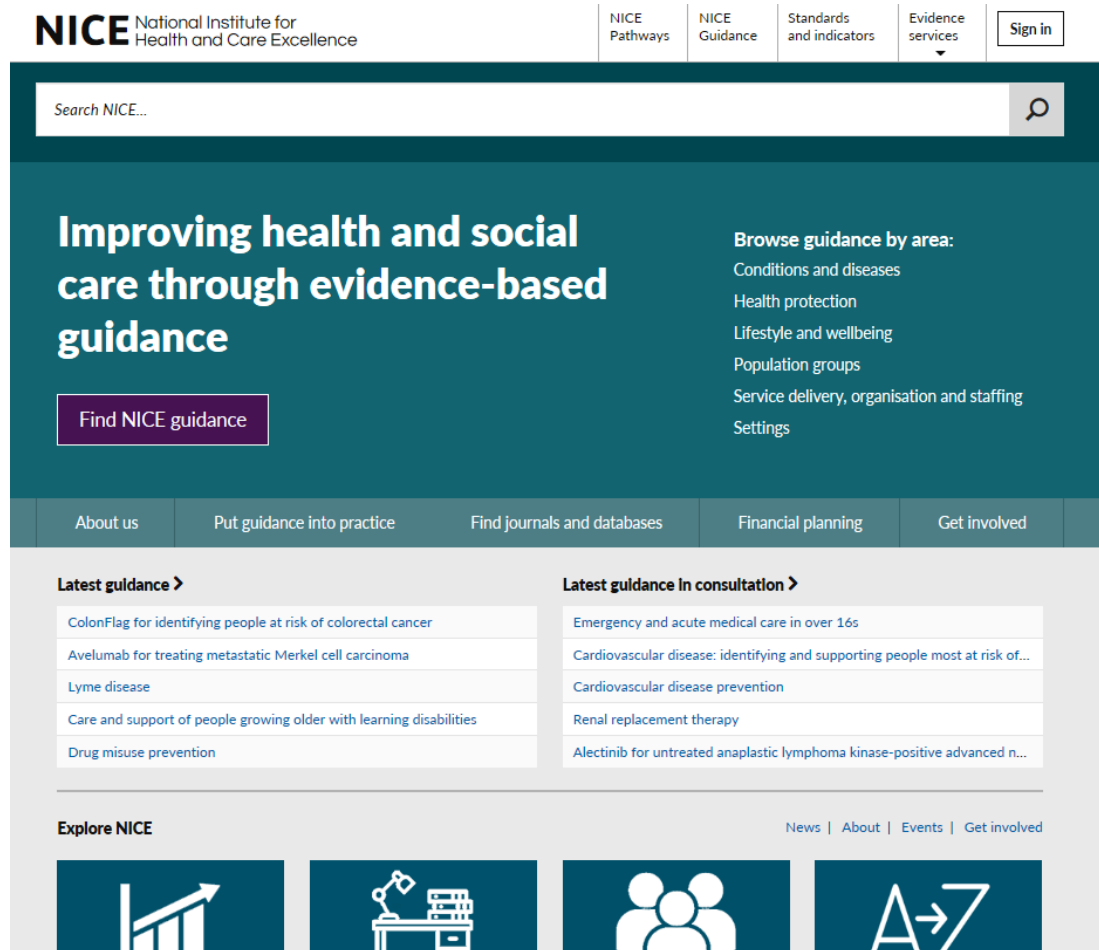
Living guidelines

Kay Nolan

Associate Director

Centre for Guidelines

National Institute of Health and Care Excellence (NICE)



The screenshot shows the NICE website homepage. At the top left is the NICE logo and the text 'National Institute for Health and Care Excellence'. To the right are navigation links for 'NICE Pathways', 'NICE Guidance', 'Standards and indicators', 'Evidence services', and a 'Sign in' button. Below this is a search bar with the placeholder text 'Search NICE...'. The main header area has a dark teal background with the text 'Improving health and social care through evidence-based guidance' and a 'Find NICE guidance' button. To the right of this text is a 'Browse guidance by area:' section with a list of categories: 'Conditions and diseases', 'Health protection', 'Lifestyle and wellbeing', 'Population groups', 'Service delivery, organisation and staffing', and 'Settings'. Below the header is a horizontal menu with links: 'About us', 'Put guidance into practice', 'Find journals and databases', 'Financial planning', and 'Get involved'. The main content area is divided into two columns: 'Latest guidance >' and 'Latest guidance in consultation >'. The 'Latest guidance' column lists items like 'ColonFlag for identifying people at risk of colorectal cancer', 'Avelumab for treating metastatic Merkel cell carcinoma', 'Lyme disease', 'Care and support of people growing older with learning disabilities', and 'Drug misuse prevention'. The 'Latest guidance in consultation' column lists items like 'Emergency and acute medical care in over 16s', 'Cardiovascular disease: identifying and supporting people most at risk of...', 'Cardiovascular disease prevention', 'Renal replacement therapy', and 'Alectinib for untreated anaplastic lymphoma kinase-positive advanced n...'. At the bottom is an 'Explore NICE' section with icons for a bar chart, a microscope, a group of people, and a document with an arrow, and links for 'News | About | Events | Get involved'.

- Independent organisation responsible for providing evidence based guidance on health and social care
- Established in 1999
- Range of guidance
 - Guidelines programme
 - Other guidance e.g. Technology appraisals, Diagnostics

NICE guidelines programme

- 289 guidelines
- Approx. 70 in development
- Portfolio in excess 300 guidelines
- Wide range of topics – health, public health and social care
- Range in size number of recommendations
- Effectiveness & cost effectiveness



Core principles



How do we keep on top of a large portfolio?

- Regular review (surveillance)– 2 year cycle unsustainable, resource reduction
- Currently consulting on alternative approach
 - Themed surveillance
 - Increased intelligence gathering
 - Development of Event tracker
 - Switch to 5 year review cycle

Living guidelines - challenges

Working definition: constant updating of guideline in response to evidence change

- Organisational: historical heterogeneity in guidelines, breadth of topics and approaches taken, core principles and impact on presentation, volume of guidelines, structure of work programme
- Stakeholder expectations/requirements: Cultural shift required?
- Dynamic review questions – experience
- Heterogeneity in type of evidence– ‘best available evidence’
- Is the unit a guideline or recommendation?

Solutions?

- Exploring technological solutions – use of NLP/text mining technologies
- Interim approach - Event tracker – proactive reactive approach
- Strengthen relationships e.g. NIHR and Cochrane
- Try alternatives for key guidelines?

Event tracker

- Track key events of relevance to guideline content (criteria for inclusion)
- As soon as the event has occurred or findings are available they are checked for likely impact
- Events:
 - A study that is directly relevant to NICE guidance
 - Substantial changes in policy and legislation
 - Development of a related piece of NICE guidance
- Sources of events:
 - Identified through surveillance or guideline development
 - Stakeholder correspondence/enquiries
 - NIHR liaison